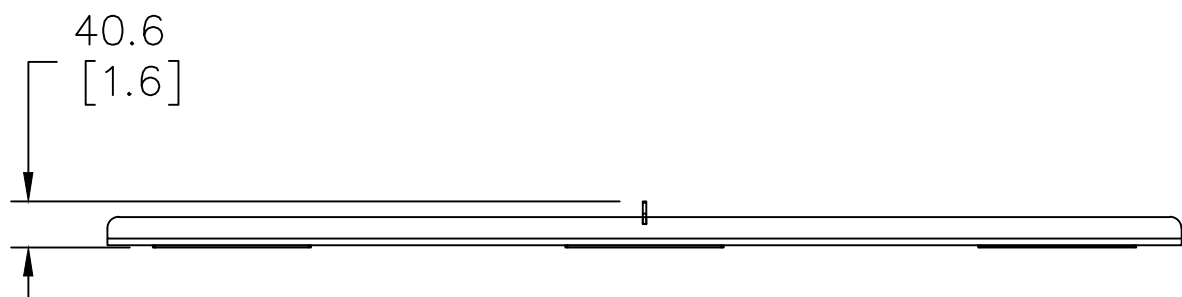
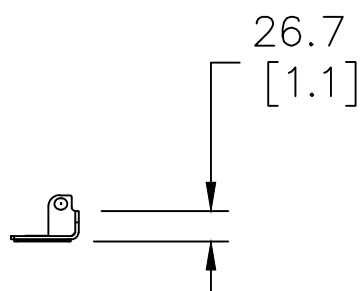
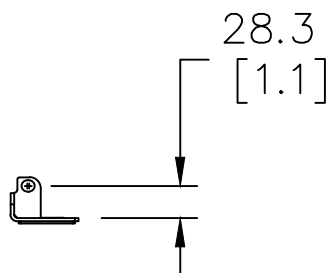
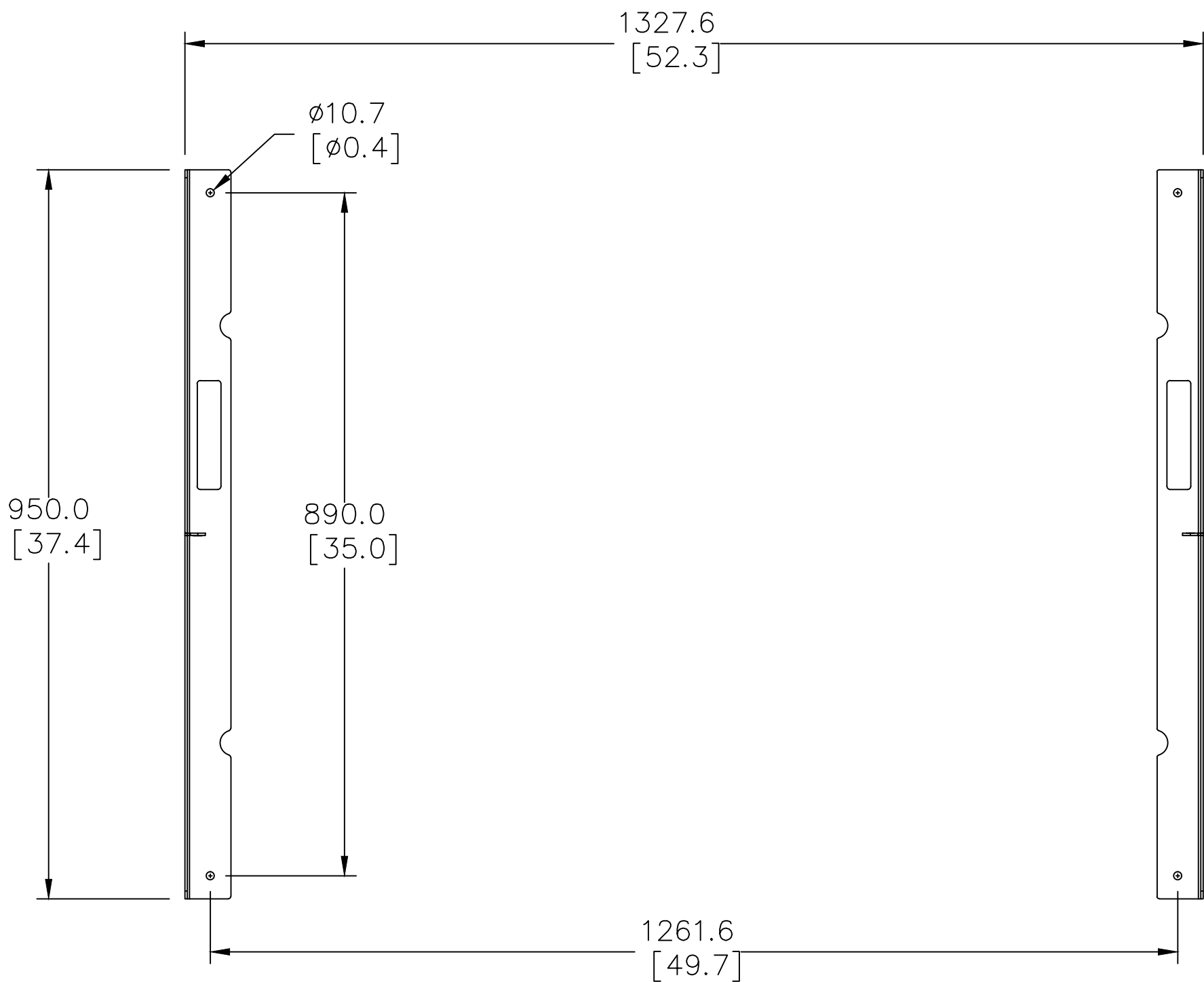


THESE DRAWINGS AND SPECIFICATIONS ARE THE PROPERTY OF JBL INCORPORATED. THEY ARE ISSUED IN STRICT CONFIDENCE AND SHALL NOT BE REPRODUCED OR USED AS THE BASIS FOR MANUFACTURE OR APPARATUS WITHOUT WRITTEN PERMISSION.


ALL MATERIAL SPECIFIED ON THIS DRAWING SHALL COMPLY WITH EUROPEAN DIRECTIVE 2002/95/EC. **RoHS**

REVISIONS						
CHG	LTR	DESCRIPTION	DRFT	D.C	DATE	APPR
---	B	RELEASE TO MARKETING	EH		4/21/20	



4. MATERIALS: 3mm THICK STEEL WITH ANTI-CORROSION COATING
3. WEIGHT: 3.75KG (8.3LBS)
2. FINISH: BLACK POWDER COAT
1. DIMENSIONS ARE: mm[in]

NOTES: (UNLESS OTHERWISE SPECIFIED)

TOLERANCES (UNLESS OTHERWISE SPECIFIED) X.XX ± .063 INCH X.X ± .125 INCH ANGULAR TOLERANCE OF 0°±30' FRACTIONAL DIMENSIONS ± 1/32 * DIMENSIONS ARE INCHES * ALL DIMENSIONS ARE FINISHED DIMENSIONS * DO NOT SCALE DRAWING		 JBL PROFESSIONAL A Harman International Company Northridge, California 91329 U.S.A.	
		TITLE CUSTOMER DRAWING, JBL-VTX B28 GND	
		SIZE A	DRAWING NO. 1000349305
		SCALE NTS	REV B
SHEET 1 OF 1			